

Research Misconduct Policy

Synopsis

What is Research Misconduct

Department of Health and Human Services defines research misconduct as:

- ***Fabrication*** – making up results and recording or reporting them.
- ***Falsification*** – manipulating research materials, equipment or processes or changing or omitting results such that the research is not accurately represented.
- ***Plagiarism*** – appropriating someone else's ideas, processes, results or words without giving proper credit.

Deliberate or repeated non-compliance with the regulations can be considered misconduct.

Criteria for Research Misconduct

- Represents a significant departure from accepted practices
- Has been committed intentionally, or knowingly, or recklessly; and
- Can be proven by a preponderance of evidence

What is NOT Misconduct

1. honest, unintentional error
2. honest differences of opinion

Institutional Requirements

- Establish policies and procedures for investigating and reporting instances of alleged research misconduct
- Provide training and education
- Promote ethical and responsible conduct of research
- Provide support to assist with correcting occurrences of misconduct

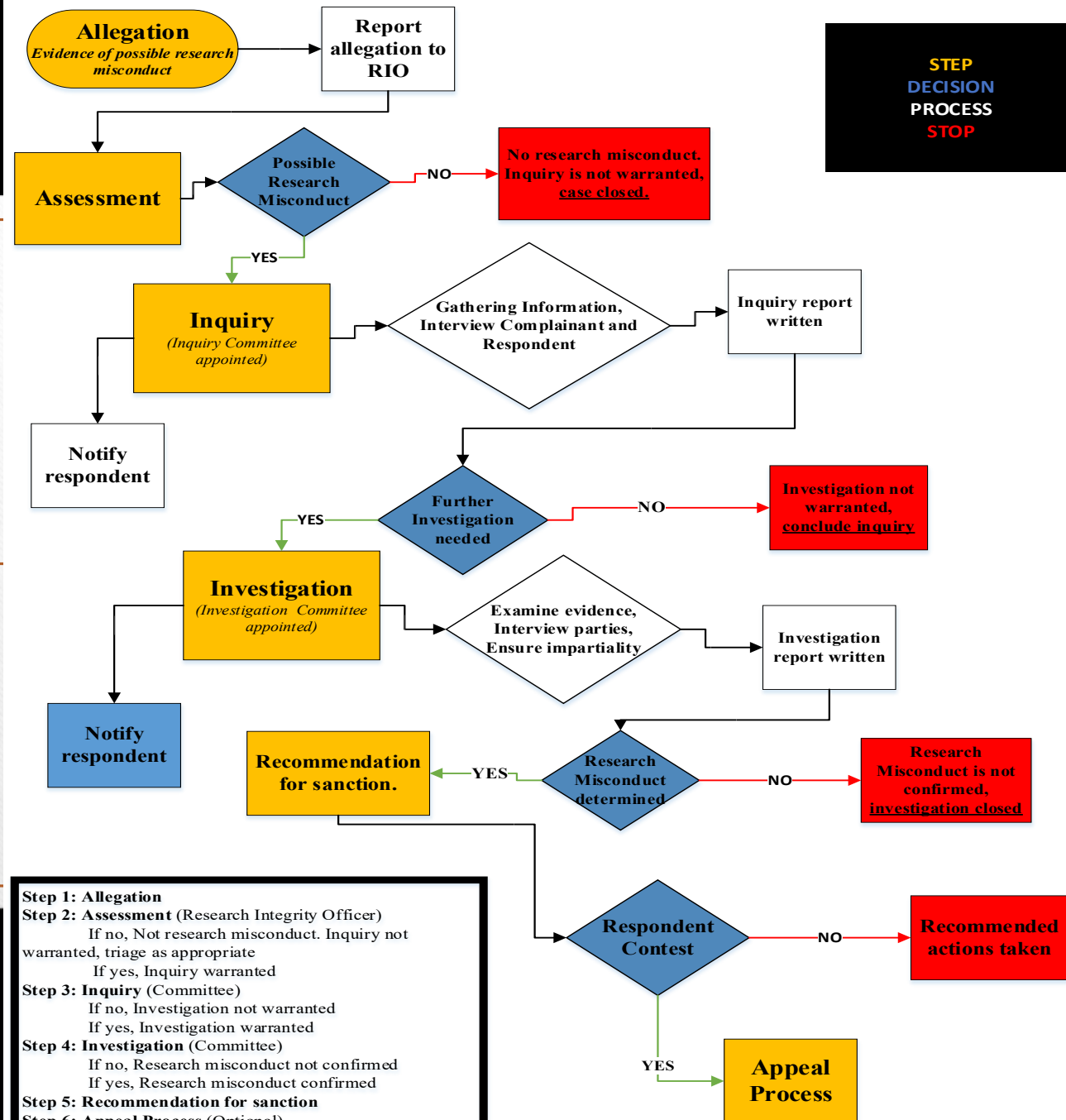
Morgan State University Policy

- ❑ Maintain high standards of honesty, accuracy and objectivity in science and other scholarly and creative works, to prevent research misconduct where possible, and to evaluate and to resolve promptly and fairly instances of alleged or apparent Research Misconduct.
- ❑ Take appropriate remedial and disciplinary action in response to findings of Research Misconduct.



Dealing with Misconduct - STEPS

Research Misconduct Investigation Flowchart





Allegation



Assessment



Inquiry

The image shows a presentation slide with a wooden background. Two dark binder rings are visible at the top and bottom center. The slide itself is white with a thin brown border. In the center of the slide is a large orange rectangle with a black border. Inside this rectangle, the word "Investigation" is written in a black, serif font.

Investigation

Recommendation for Sanction



Thank You!
