

STAGE SPECIFICATIONS

JAMES H. & LOUISE HAYLEY GILLIAM CONCERT HALL

Seating Capacity 2,036

Proscenium Opening	66'-0"
Proscenium Height	26'-0"
Apron to Back Wall	45'-8"
Plaster Line to Back Wall	40'-0"
Curtain Line to Back Wall	38'-2"
Orchestra Pit to Back Wall	55'-5"
Curtain Line to Apron	7'-6"
Curtain Line to Orchestra Pit	17'-3"
Orchestra Pit	Width 71'-0"
Orchestra Pit	Depth 9'-9"
Orchestra Pit Hydraulic	Depth 15'-0"
Center to Stage Right (Fly Rail)	61'-0"
Center to Stage Left	58'-0"

PLEASE NOTE: The wing space will be affected by the proscenium opening that is set. The wing space minimum is 17'. The wider proscenium openings also affect the space available at the locking rail.

Height to under:

Fly Gallery	31'-0"
Loading Gallery	56'-0"
Grid	62'-0"
House Floor to Stage	3'-6"
Crossover upstage of the last line	3'-6"
Orchestra Pit capacity	50 Musicians
Projection Distances:	
Control booth to Apron	92'-0"
First Balcony to Apron	88'-0"
Second Balcony to Apron	96'-0"
1 st Bridge/Catwalk to Apron	70'-0"
2 nd Bridge/Catwalk to Apron	98'-0"
Spotlight Positions to Apron	98' (fixed) / 86'

STAGE EQUIPMENT

PLEASE NOTE: The use of all stage equipment is subject to availability and in some instances at an additional rental fee.

Organ(s):

Allen Digital Computer Organ	1
Hammond B 3	1

Piano(s):

Steinway Concert D (special rental)	1
Steinway B	1

Podium:

Conductor / gray Wenger (two tier)

Risers:

Choral – 6' gray Wenger 3-tier	8
Tops Wenger, 3'x8'	24
Legs: 8" - 16" - 24" - 32"	

Acoustic Ceiling (three sections) 1

Acoustic Towers 10

O'Mara Spring Dance Floor 1 (39' 7" x 35' 0" (w/ Ramps & Curb: 40' 6.5"

x

35' 1.5'

Marley Dance Floor (Black/Gray)
Chairs: Black Wenger Musician
Music Stands

6 pieces (i.e. 40'x30')
150

SOUND

FOH

- A:** 1x - Allen & Heath DLive S5000 Mixing console
- B:** 1x - Allen & Heath DM64 Stage Box (64 inputs/32 outputs)
- C:** 1x - Audinate Dante 96K Card
- D:** 2x - Allen & Heath GigaAce Card
- E:** 2x - Netgear Dante Switches

Monitor

- A:** 1x - Allen & Heath DLive S5000 Mixing console
- B:** 1x - Allen & Heath DM48 Stage Box (48 inputs/24 outputs)
- C:** 1x - Audinate Dante 96K Card
- D:** 1x - Allen & Heath GigaAce Card
- E:** 1x - Allen & Heath DX32 Stage Box (24 inputs/8 outputs)
- F:** 8x - L'Acoustics 112P Stage Monitors

Amps

- A:** 2x - L'Acoustics LA8
- B:** 1x - Crest 3301-monitor (Narhex Play Back)

Playbacks rack

- A:** 1x - Apple iMac with Qlab 5
- B:** 1x - Dennon Blue Ray player/recorder
- C:** 1x - Barco Clickshare

Speaker Boxes-L'Acoustics ARC WiFo

- A:** 4x - L'Acoustics ARC Wide
- B:** 4x - L'Acoustics ARC Focused
- C:** 4x - L'Acoustics SB18M

Microphones

- A:** 4x - Shure ULXD4Q
- B:** 16x - Shure ULXD2 w/Beta SM58
- C:** 16x - Shure ULXD1 w/MX 150B/C
- D:** 4x - Shure KSM32 w/basket mount
- E:** 2x - Beyer Dynamic Large Drum Pack
- F:** 1x - DPA Symphonic Microphone Kit
- G:** 3x - DPA 4099 Piano Microphone Set
- H:** 2x - AKG C214 B
- I:** 2x - Shure Beta 87
- J:** 4x - Shure Beta 58
- K:** 2x - Shure MX418 Gooseneck Podium Microphone

Snakes / DI's

- A:** 4x Fiber Optic Audio Snake
- B:** 18x - Whirlwind mic cable
- C:** 8x - Whirlwind 1/4" instrument cable
- D:** 8x - Speakerconn cable
- E:** 4x - Radial Direct Boxes Pro2
- F:** 2x - Radial Direct Boxes Pro2

Power Distribution

- 1 / 200-amp Three phase

Hearing Assistance

A: 1x - Sennheiser S120-Hearing Transmitter

Video

- A: 1x - Chauvet Pro F2 52 panel Video Wall
- B: 3x - Chauvet Pro VIPDrive83
- C: 2x - Spare Video Camera Connections
- D: 1x - Vaddio AV Bridge MatrixMIX
- E: 1x - Vaddio Switcher
- F: 1x - Panasonic 4K 30x Robotic Camera (Center)
- G: 2x - Panasonic 4K 20x Robotic Camera (Left and Right)
- H: 1x - Windows 10 Laptop w/WSN Streaming Software

FOH-Mix Position

Location (1) FOH left rear of the concert hall inside control room booth with 2 sliding windows and equip...with one Fostex 4” near field monitor. The Audio Engineer is just under the first balcony direct view of the full stage.

Location (2) FOH left rear on the concert hall floor. The Audio Engineer is facing the FOH Left line array with clear site view of the entire stage.

Snake Panels

2-panels of 6-pack input snake on stage left and right, down stage, and in the orchestra pit left and right back wall.
Two 8-pack channel Sub snakes. All microphone inputs are separate and patchable.

All request for specific microphones and DI boxes must be made in advance and are subject to availability.

Sound Pressure Levels

Due to the potential volume levels available with our FOH system that may come into the building with a show, MFAC has adopted a very strict policy regarding SPL. The following maximum db level restrictions have been set for the protection of our audience members, crew, and artists. At no time shall the maximum A-weighted SPL ever reach above 110db at the Center of the House (COH) in row “EE.” MFAC reserves the right to direct their Head Audio Engineer or his designate to reduce system levels to remain within acceptable SPLs.

A-weight SPL @ COH	Maximum Time
95db	4 hours
97db	2 hours
100db	1 hour
102db	30 minutes

Audio Challenges in the Concert Hall

We have learned a lot since our venue opened, most of it the hard way. Since we want you to have the best possible sound quality for your event, please take a moment to learn from our experiences. The Concert Hall was designed primarily for vocal and instrumental naturally driven acoustic events.

Clearcom Intercom system

A: 10x-wireless stations 2-ch

LIGHTING

Control Console

ETC ION –with 40 Sub Master Side Wing

SYSTEM CAPACITY

- 1,024 or 6,144 outputs
- 16,000 Channels (mapped from 1 to 99,999)
- 10,000 Cues
- 999 Cue Lists
- 200 Active Playbacks
- 999 Submasters
- 4 x 1000 Palettes (Intensity, Focus, Color, Beam)
- 1000 Presets (all palette)
- 1000 Groups
- 1000 Effects (relative, absolute or step)
- 99,999 Macros
- 1000 Snapshots
- 1000 Curves
- 1000 Color Paths
- Supports two external DVI monitors or one Display Port monitor at 1280x1024 minimum resolution or multi-touch screen control
- Solid-state hard drive
- USB ports for flash drives, pointing devices, keyboards

INTERFACES

- 2 DMX-512 / RDM Ports
- Ethernet (ETCNet2™, Net3™, Artnet and Avab UDP output protocols)
- Contact Closure triggers via D-Sub connector
- Two DVI connectors support two external DVI displays(1280x1024) with optional touch- or multi-touch screen control
- One Display Port connector (Note: only 2 of Ions 3 monitor ports may be used at once)
- Seven multipurpose USB ports
- Net 3 Radio Focus Remote
- MIDI Timecode, MIDI Notes and MIDI Show Control through Gateway
- SMPTE Timecode through Gateway
- Additional contact closure (12 analog inputs, 12 SPDT contact outputs, RS-232) through Gateway
- One eSATA port
- OSC Transmit and Receive
- UDP Transmit and Receive

DIMMERS AND CONTROL

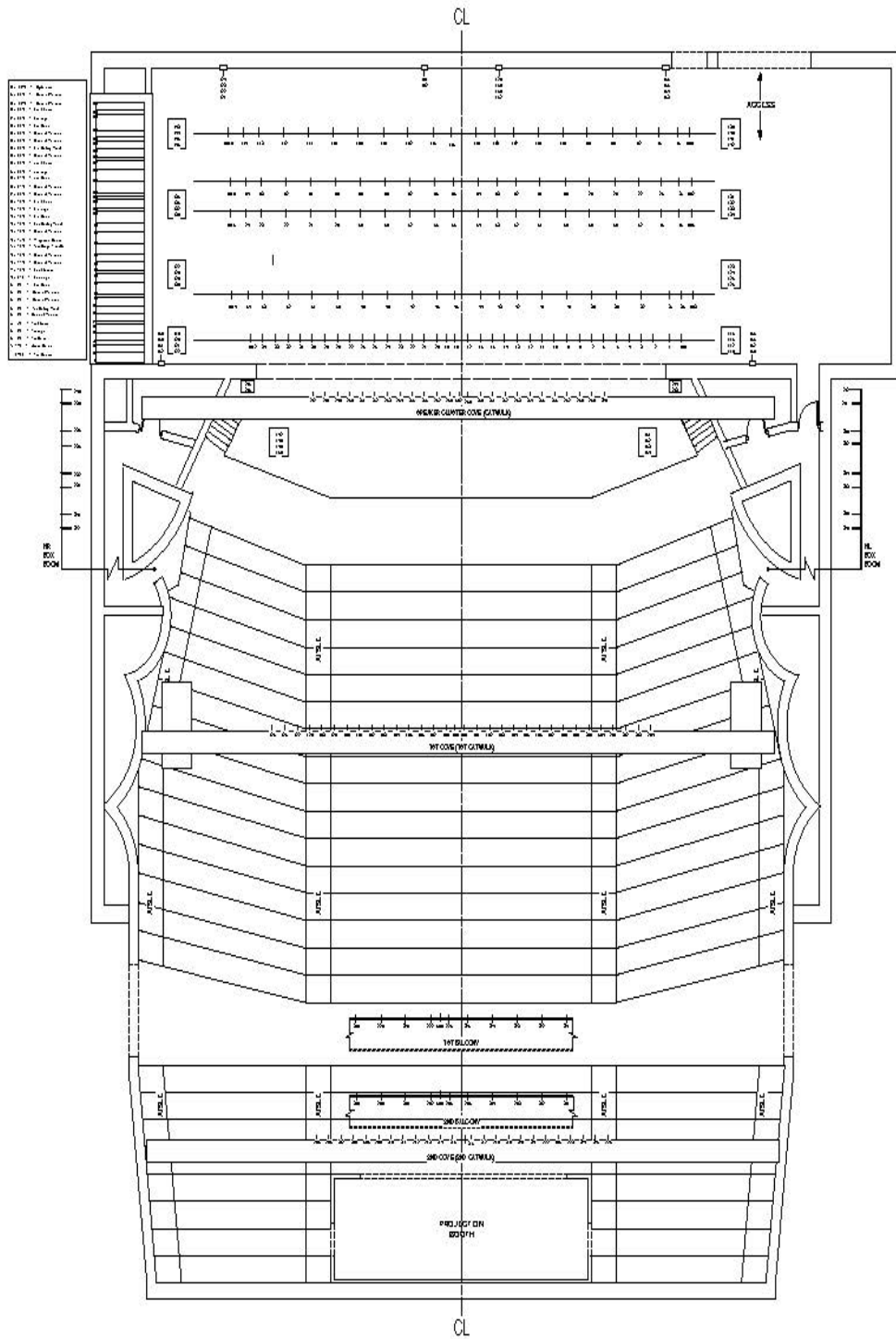
290 (2.4K) – dimmers

9 (6k) – dimmers

LIGHTING FIXTURE INVENTORY

The Gilliam Concert Hall is a “stripped” venue with a very limited lighting inventory with (32) 750-watt 10-degree lekos in a four-color wash (Red-Blue-Amber-No Color). (2) Lycian 1275 Spot Lights

GILLIAM CONCERT HALL LIGHTING PLOT



POWER DISTRIBUTION

1 / 400-amp Three phase

1 / 200-amp Three phase

LOADING

FOH 1st & 2nd Balcony Rails
Length - 36'

RIGGING

Weight capacity – 3000 lbs. / baton

DRAPERIES

Grand Drape

26 oz. Velour (maroon) 100% full, 2 @ 28'h x 36'w – w/2' Center Total Overlap

Legs and borders

5 (set-pair) Legs - 26 oz. Velour (black), Flat, 28'h x 12'w

5 Borders - 26 oz. Velour (black), Flat, 8'h x 86'w

Cyclorama

CBS grey lino, Flat, 30'h x 70'w

DRESSING FOOMS

Stage Level (2nd floor)

2 - Greens Rooms

2 - Single Dressing (w/shared bathroom & shower)

Below Stage (1st floor)

1 - Single Dressing (w/bathroom & shower)

2 - Single Dressing (w/shared bathroom & shower)

2 - Chorus Dressing - 9 / occupancy per (w/bathroom & shower)

2 - Chorus Dressing - 11 / occupancy per (w/bathroom & shower)

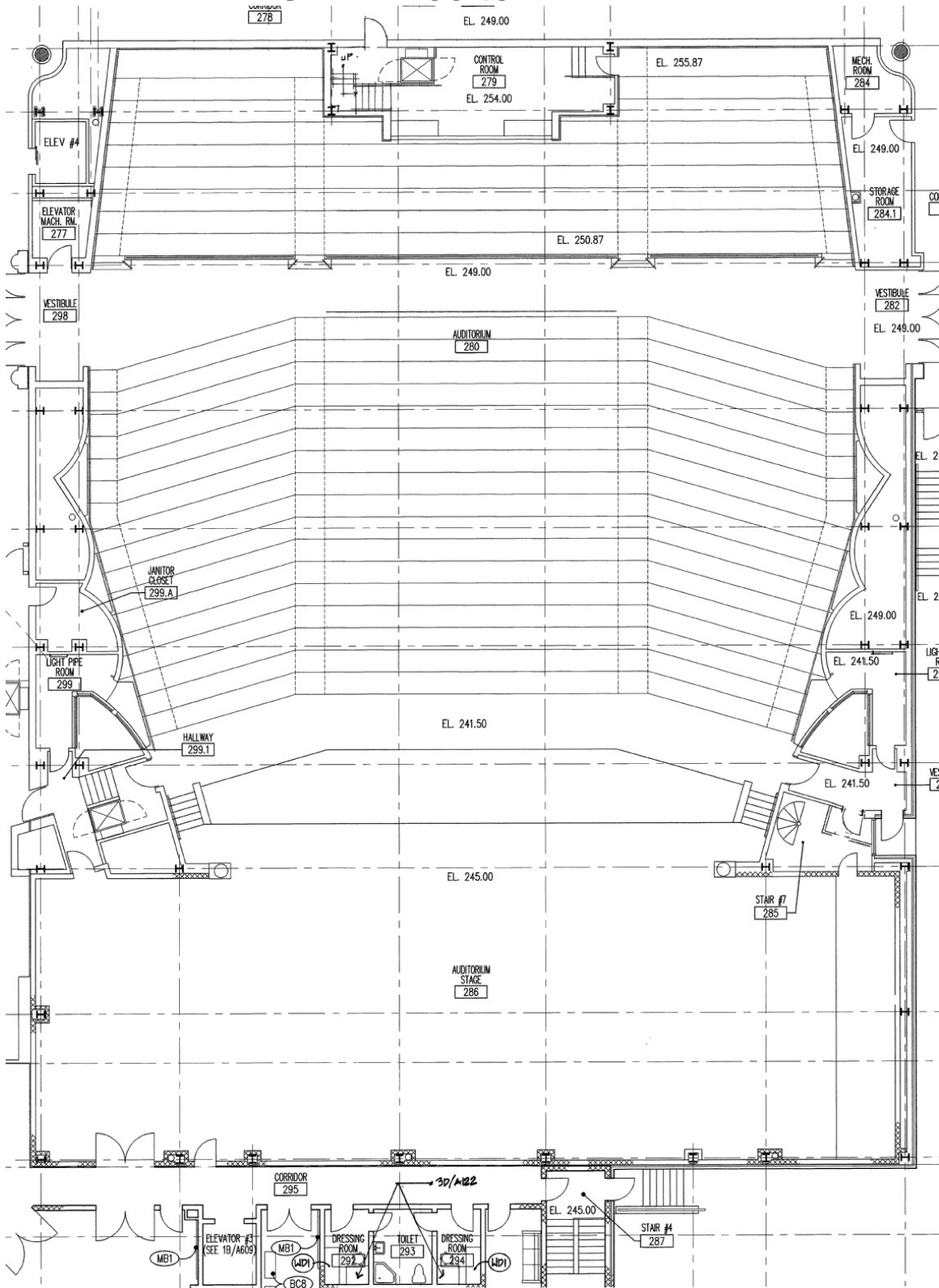
WARDROBE ROM

Stage Level (2nd floor)

Industrial Washer 7 dryer (Uni-Mac)

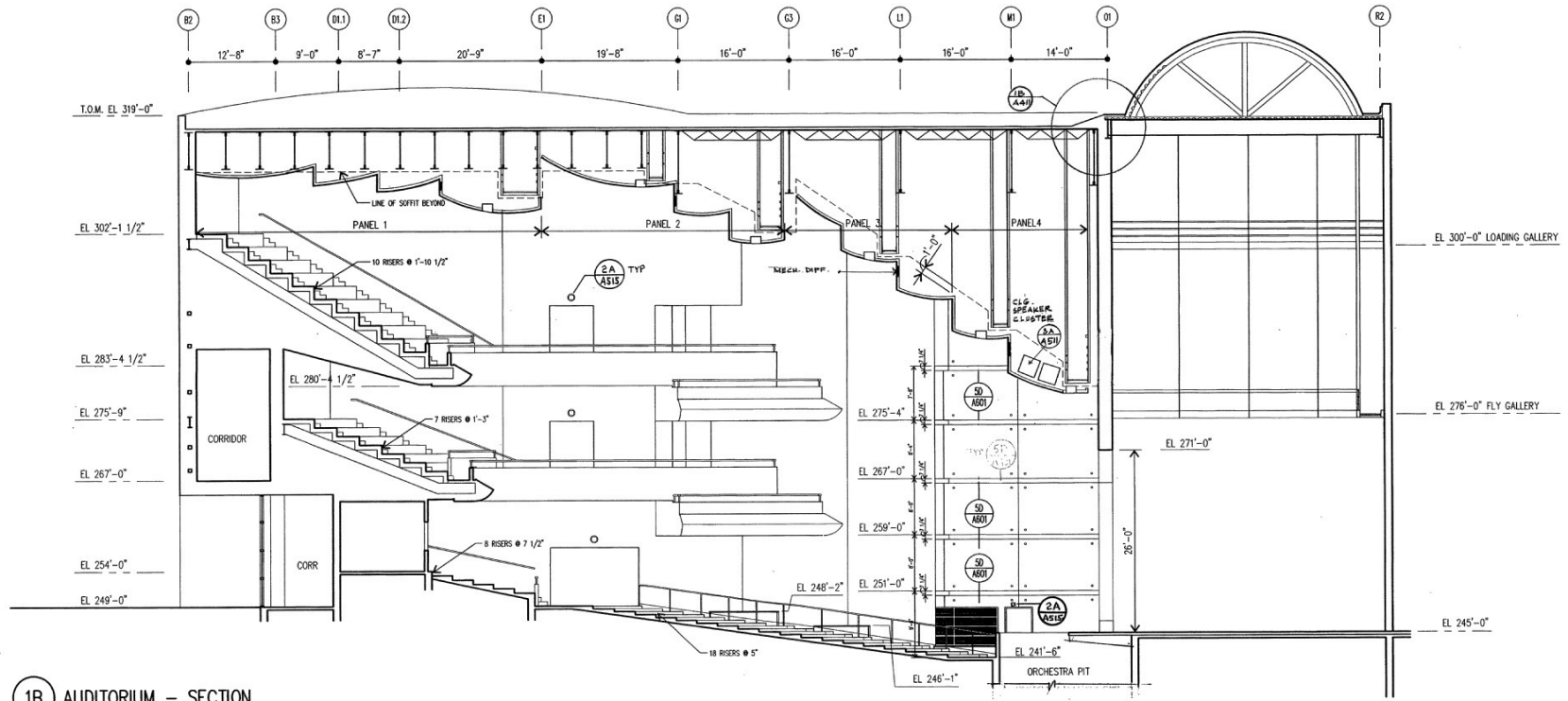
2 Sewing Machines (Brother)

GILLIAM CONCERT HALL



1 EQUIPMENT/FURNITURE PARTIAL PLAN - SECOND FLOOR

GILLIAM CONCERT HALL CROSS SECTION



1B AUDITORIUM - SECTION

1/8" = 1'-0"

LINE-SET SCHEDULE

<u>LINE-SET #</u>	<u>DESCRIPTION</u>	<u>DIM. TO PL</u>	<u>NOTES</u>
1	FIRE CURTAIN HOUSE CURTAIN	0'-2.5" 1' - 6"	LATTICE TRACK ASSMBLY 25 OZ IFR CHARISMA POLY VELOUR, 100% FULL, 2 @ 28'H X 40'W / 2' CENTER TOTAL OVERLAP
2	1 ST BORDER	2' - 6"	25 OZ IFR CHARISMA POLY VELOUR, FLAT, 8'H X 86'W
3	1 ST LEGS	3' - 0"	25 OZ IFR CHARISMA POLY VELOUR, FALT, 28'H X 12'W
4	1 ST ELECTRIC	4' - 0"	
5	GENERAL PURPOSE	5' - 0"	
6	1 ST CEILING PANEL	5' - 6"	
7	GENERAL PURPOSE	6' - 6"	
8	GENERAL PURPOSE	7' - 6"	
9	2 ND BORDER	8' - 6"	25 OZ IFR CHARISMA POLY VELOUR, FLAT, 8'H X 86'W
10	2 ND LEGS	9' - 0"	25 OZ IFR CHARISMA POLY VELOUR, FALT, 28'H X 12'W
11	2 ND ELECTRIC	10' - 6"	
12	GENERAL PURPOSE	11' - 6"	
13	GENERAL PURPOSE	12' - 0"	
14	MID STAGE TRAVELLER	13' - 0"	15 OZ IFR CHEVRON POLY, UNLINED, 50% FULL 2@ 28'H X 36'W EACH, 2' CENTER TOTAL OVERLAP
15	CHAUVET F2 VIDEO WALL	14' - 0"	
16	GENERAL PURPOSE	15' - 6"	
17	2 ND CEILING PANEL	16' - 0"	
18	3 RD BORDER	17' - 0"	25 OZ IFR CHARISMA POLY VELOUR, FLAT, 8'H X 86'W
19	3 RD LEGS	18' - 0"	25 OZ IFR CHARISMA POLY VELOUR, FLAT, 28'H X 12'W
20	3 RD ELECTRIC	19' - 6"	
21	GENERAL PURPOSE	20' - 0"	
22	GENERAL PURPOSE	21' - 0"	
23	4 TH BORDER	21' - 6"	25 OZ IFR CHARISMA POLY VELOUR, FLAT, 8'H X 86'W
24	4 TH LEGS	22' - 0"	25 OZ IFR CHARISMA POLY VELOUR, FLAT, 28'H X 12'W
25	4 TH ELECTRIC	23' - 6"	
26	GENERAL PURPOSE	25' - 0"	
27	3 RD CEILING PANEL	26' - 0"	
28	GENERAL PURPOSE	26' - 6"	
29	GENERAL PURPOSE	27' - 6"	
30	5 TH BORDER	28' - 6"	25 OZ IFR CHARISMA POLY VELOUR, FLAT 8'H X 86'W
31	5 TH LEGS	29' - 0"	25 OZ IFR CHARISMA POLY VELOUR, FLAT, 28'H X 12'W

32	5 TH ELECTRIC	30' - 0"	
33	GENERAL PURPOSE	32' - 0"	
34	GENERAL PURPOSE	32' - 6"	
35	CYCLORAMA	33' - 6"	CBS GRAE LINO, FLAT, 30'H X 70'W